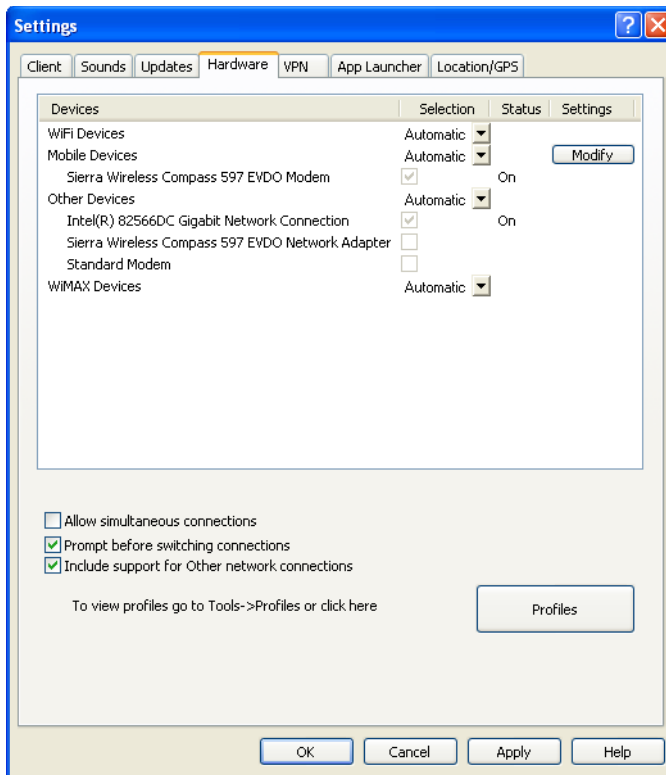


The Hardware Tab

The Hardware tab is used to configure hardware-related settings for connection establishment.



The following items can be found on this tab:

The Device List

This four column table takes up most of the tab's area. It is a list of all the devices connected to your computer that may be used to establish network connections. Among other things, you can do the following here:

- You can enable and disable individual devices.
- If you have multiple devices of the same type, you can choose which one to use.
- You can configure extended properties for Mobile Broadband and Dialup devices

For more information, see "The Device List" on page 135.

Allow simultaneous connections

If this box is checked, Sprint SmartView will allow you to establish more than one connection at a time (for example, you could be connected to both WiFi and Mobile Broadband concurrently).

If this box is NOT checked, Sprint SmartView will prompt you to disconnect before allowing you to establish a second connection.

Prompt before switching connections

When in automatic connection mode, the Sprint SmartView software can automatically switch to a higher priority network if one becomes available. However, since the original connection is shut down once the new connection is fully established, this has the potential to disrupt any activity that was relying on the original connection.

If this box is checked, Sprint SmartView will prompt you for permission to switch networks before it actually does so.

Include support for Other network connections

When this box is checked, Sprint SmartView will monitor devices listed in the “Other Devices” group. When it detects that a device listed in this group has established a connection, it can respond by shutting down its own connections. For example, it can shut down a wireless connection it has established when you connect to an Ethernet network. For a disconnection to occur, both of the following must also be true:

- In the Device List, the “other” device which has established a connection must be selected in the “Other Devices” group (to see which devices are currently selected, set the menu in the ***Selected*** column to “Manual”).
- In the Network Profiles window, “Other Connections” must be listed above the profile for the network to be disconnected. See “Network Profile Priority” on page 105 for more information.

When this box is not checked, Sprint SmartView will not respond to connections established by “Other Devices.”

CDMA/WiMAX Dual Mode Settings (Dual Mode Devices only)

This group of settings only appears if your Mobile Broadband device is a dual mode device that supports both CDMA and WiMAX. Use it to specify when the Sprint SmartView software will switch the device from WiMAX mode to CDMA mode. It currently has two options:

- ***Automatic*** — Whenever you connect your Mobile Broadband device, the Sprint SmartView software will switch the device to WiMAX mode. If you fail to connect via WiMAX, the software will switch the device to CDMA mode.
- ***CDMA Only*** — The Sprint SmartView software will leave the device in CDMA mode at all times.

A third option, ***WiMAX Only***, is not available at this time.

The Profiles Button

Click this button to open the Network Profiles window.